



LED Lamps, Modules, Lights, Towers, Dot Matrix,
Creating A Brighter Tomorrow with LEDs

sales@seoul-international.co.kr www.seoul-international.com

+82-2-2232-3716 & 3717 +82-2-2232-3718

Note: Please scroll down for more information & products (this pdf file contains SEVEN pages).



LED Sign & Display Modules SIC-5017-X



Product features
 * Driving voltage: DC 24V (built-in electrostatic, protective circuit) * 2 holes 2 White / Red / Green / Blue (3 Chips in a Package)
 * Waterproof (IP67) & dustproof (used indoor/outdoor)
 * Possible to apply to small size / middle size / large size channel character signboards * Easy to install - 25 Module (1 Set) connection
 - 3M High efficiency double-sided tape attachment

LED Sign & Display Modules SIC-5050-X



Product Characteristics
 * Drive voltage : DC 24V (built-in electrostatic circuit) * 4 holes White / Red / Green / Blue (3 Chips in a Package)
 * Waterproof (IP67) & dustproof (indoor/outdoor use)
 Possible to apply to Small size/middle size/large size channel character signboards* Easy to install - 25 module (1 Set) connection
 - 3M high-efficient double-sided tape attachment

LED Sign & Display Modules SIC-5017-F



Product Characteristics
 * Drive voltage: DC 24V (built-in electrostatic protective circuit) * 2 hole RGB Full Color (3 Chips in a Package) * Waterproof (IP67) & dustproof (indoor / outdoor use) * Possible to apply to small / medium / large size channel character signboards
 * Easy to install - 25 module (1 Set) connected
 - 3M high efficient double-sided tape attachment
 * Possible for color production / changing speed (Controller option) - RGB Controller LC series (LC002 / LC003 / LC004-1CH / LC004-15CH/LD003) connected.

LED Sign & Display Modules SIC-5050-F



Product Characteristics
 * Drive voltage: DC 24V (built-in electrostatic protective circuit) * 4 hole RGB Full Color (3 Chips in a Package) * Waterproof (IP67) & dustproof (indoor / outdoor use) * Possible to apply to small / medium / large sized channel character signboards
 * Easy to install - 25 module (1 Set) connected
 - 3M high efficient double-sided tape attached
 * Possible for color production / changing Speed (Controller option) - RGB controller LC series (LC002 / LC003/LC004-1CH/LC004-15CH/LD003) connected

LED Sign & Display Modules SIC-601-X



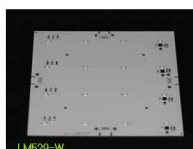
Product Characteristics
 * Drive voltage: DC 12V
 * 51 LEDs (1Chip per Package)
 Metal(Al)PCB Applied * PCB size: 360mm (L) x 6mm (W) x 1.6mm (T)
 * Metal PCB heat conduction rate: 1.8W/mK
Main uses
 * Light panels for advertisement (Edge radiation type) * Indoor direct/ indirect lighting
 * CCFL / EEFL Substitutive lighting

LED Sign & Display Modules SIC-606-W



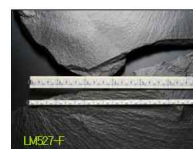
Characteristics of Product
 * Drive voltage: DC 12V (built-in electrostatic protective circuit) * 21 LEDs (3 Chips in a Package)
 Metal (Al) PCB applied
 * PCB size: 327mm(L)x 6mm(W)x 1.6mm(T)
 * Heat conduction of Metal PCB : 1.8W/mK
 * 3 LED block design (possible to use by cutting and connecting)
Main uses
 * Light panels for advertisements (Edge radiation type)* Indoor direct / outdoor indirect

LED Sign & Display Modules SIC-529-W



Product Characteristics
 * Flat illuminant module (Hard PCB)
 * 16 LEDs (2 Chips in a Package) Hard PCB module * Drive voltage: DC 24V (electrostatic circuit included)* PCB size: 160mm (L) x 160mm (W) x 1.6mm (T) * Easy to install (Wire Connector connection type)
Main uses
 * Light panels for advertisements (vertical descent radiation type)* Indoor direct/ indirect lighting* CCFL / EEFL substitutive lighting

LED Sign & Display Modules SIC-527-F



Product Characteristics
 * RGB Full Color Bar * 18 LEDs (3 Chips in a Package) Hard PCB Module * Drive: DC 12V
 * PCB size: 360mm(L)x 23mm/10mm(W)x 1.6mm (T)
 * 3 LED block design (possible to use by cutting and connecting) * Possible for color production / changing Speed - RGB Controller LC Series (LC002 / 003/004)
Main uses
 * Light panels for advertisements, slip signs (Edge radiation type)* Indoor / outdoor display illuminant, scene lighting



LED Lamps, Modules, Lights, Towers, Dot Matrix,
Creating A Brighter Tomorrow with LEDs

sales@seoul-international.co.kr www.seoul-international.com

+82-2-2232-3716 & 3717 +82-2-2232-3718

LED Controller & Driver Model LC-002



Product Characteristics
 * RGB Full Color Controller (SIC-5017-F / 5050-F / 527-F compatible) * Drive voltage: DC 12V / 24V (Used according to module drive voltage)
 * Possible to produce multiple colors and change speed
 - RGB Color production: 32 Types
 - Speed change: 8 Steps
 - Switch changing type
 * Size: 70mm (L) x 45mm (W) x 18mm (H)

LED Controller & Driver Model LC-003



Product Characteristics
 * RGB Full Color Controller (SIC-5017-F / 5050-F / 527 Compatible)
 * Drive voltage: DC 12V
 * Possible to produce multiple colors and change Speed
 - RGB Color Production: 8 Types
 - Button changing type
 * Size: 35mm (L) x 23mm (W) x 16mm (H)

LED Controller & Driver LC-004 1 CH



Product Characteristics
 * RGB Full Color Controller (SIC5017-F / 5050-F / 527 Compatible)
 * Drive voltage: DC 12V/24V (used according to module drive voltage) * Possible to produce multiple colors and change Speed
 - User program changing type
 - 1 channel color production and speed changing mode * Size: 65mm (L) x 59mm (W) x 14.5mm (H)

LED Controller & Driver LC-004 15 CH



Product Characteristics
 * RGB Full Color Controller (SIC5017-F / 5050-F / 527 Compatible)
 * Drive voltage: DC 12V/24V (used according to module drive voltage) * Possible to produce multiple colors and change Speed - User program changing type - 15 channel color production and speed changing mode

LED Controller & Driver Model LD-003



Product Characteristics
 * RGB Full Color Controller (SIC5017-F / 5050-F / 527 Compatible) * Drive voltage: DC 12V/24V (used according to module drive voltage) * Possible to produce multiple colors and change Speed - User program changing type - 15 channel color production and speed changing mode
 - Driver (LD003) connection mode
 * Size: 52mm (L) x 63mm (W) x 29mm (H)

LED Lighting Illumination SIC-MR16(3W)



Product Characteristics
 * Halogen MR16 Substitutive Lighting
 * 2 G x 5.3 Pin - 50° View Angle
 * Drive voltage: AC / DC 12V
 * Built-in electrostatic circuit
 * Case material: Heat cond. compound shape forming
 * Life: about 30,000 hours
Main uses
 * Constructive (indoor / outdoor) lighting * Scene lighting * Stage lighting * Portable Flash Lights

LED Lighting Illumination SIC-MR16(5W)



Product Characteristics
 * Halogen MR16 Substitutive Lighting
 * 2 G x 5.3 Pin - 10 / 38 / 60° View Angle
 * Drive voltage: AC / DC 12V * Built-in electrostatic circuit * Case material: Aluminum (Al)
 * Life: About 25,000 hours
Main uses
 * Construction (indoor / outdoor) lighting
 * Scene lighting * Stage lighting
 * Portable Flash Lights

LED Lighting Illumination SIC-GU10(5W)



Product Characteristics
 * Halogen GU10 Substitutive Lighting
 * GU10 - 10 / 38 / 60° View Angle
 * Drive voltage: AC 90 ~ 240 V * Built-in electrostatic circuit * Case material: Aluminum (Al)
 * Life: about 25,000 hours
Main uses
 * Construction (indoor / outdoor) lighting
 * Scene lighting * Stage lighting

LED Lighting Model SIC-PAR16(5W)



Product Characteristics
 * Halogen PAR16 Substitutive Lighting
 * PAR16 - 10 / 38 / 60° View Angle * Drive voltage: AC 90 ~ 240V * Built-in electrostatic circuit
 * Case material: Aluminum(Al) * Life: 25,000 hours
Main uses
 * Construction (indoor / outdoor) lighting
 * Scene lighting
 * Stage lighting

LED Lighting Model SIC-PAR30(10W)



Product Characteristics
 * Halogen PAR30 Substitutive Lighting
 * PAR30 - 25 / 45° View Angle
 * Drive voltage: AC 90 ~ 240 V
 * Built-in electrostatic circuit * Case material: aluminum (Al) * Life: about 40,000 hours
Main uses
 * Construction (indoor / outdoor) lighting
 * Scene lighting
 * Stage lighting



The Specifications are subject to change without notice for improvement. All dimensions are in millimeters. Tolerance is +/-0.25mm unless otherwise specified.



LED Lamps, Modules, Lights, Towers, Dot Matrix,
Creating A Brighter Tomorrow with LEDs

sales@seoul-international.co.kr www.seoul-international.com

+82-2-2232-3716 & 3717 +82-2-2232-3718

LED Tower Type (Standard Lamp)



Size: \varnothing 2.0mm, Vf(v): 2.0~2.6
Material: GaP/GaP & GaAsP/GaP
Emitting Colors: Bright RED, Orange
Yellow Green, Yellow, Hi-Eff Red,
568~700nm, Defused Colors
Viewing Angle: 120
P/N SIC-LED-213

LED Panel Dot (Standard Lamp)



Size: \varnothing 1.75mm, Vf(v): 2.0~2.6
Material: GaP/GaP & GaAsP/GaP
Emitting Colors: Bright RED,
Yellow Green, Yellow, Hi-Eff Red,
568~700nm, Defused Colors
Viewing Angle: 75
P/N SIC-LED-223

LED Rectangular Type (Standard Lamp)



Size: \varnothing 2.0, 5.0, 7.0mm, Vf(v): 2.0~2.6
Material: GaP/GaP & GaAsP/GaP
Emitting Colors: Bright RED, Orange
Yellow Green, Yellow, Hi-Eff Red,
568~700nm, Defused Colors
Viewing Angle: 120
P/N SIC-LED-253

LED Round Flangeless (Standard Lamp)



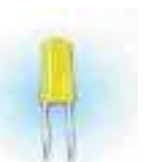
Size: \varnothing 3.0mm, Vf(v): 2.0~2.6
Material: GaP/GaP & GaAsP/GaP
Emitting Colors: Bright RED,
Yellow Green, Yellow, Hi-Eff Red,
568~700nm, Defused Colors
Viewing Angle: 35
P/N SIC-LED-3B4

LED Small Flange (Standard Lamp)



Size: \varnothing 3.0mm, Vf(v): 2.0~2.6
Material: GaP/GaP & GaAsP/GaP
Emitting Colors: Bright RED,
Yellow Green, Yellow, Hi-Eff Red,
568~700nm, Defused & Transparent Colors
Viewing Angle: Defused 45 /Trans 30
P/N SIC-LED-3A4

LED Cylindrical Type (Standard Lamp)



Size: \varnothing 3.0mm, Vf(v): 2.0~2.6
Material: GaP/GaP & GaAsP/GaP
Emitting Colors: Bright RED, Orange
Yellow Green, Yellow, Hi-Eff Red,
568~700nm, Defused Colors
Viewing Angle: 130
P/N SIC-LED-304

LED Round Flangeless (Standard Lamp)



Size: \varnothing 4.7mm, Vf(v): 2.0~2.6
Material: GaP/GaP & GaAsP/GaP
Emitting Colors: Bright RED, Orange
Yellow Green, Yellow, Hi-Eff Red,
568~700nm, Defused Colors
Viewing Angle: Defused 45 /Trans 40
P/N SIC-LED-473

LED Cylindrical W/Angle (Standard Lamp)



Size: \varnothing 5.0mm, Vf(v): 2.0~2.6
Material: GaP/GaP & GaAsP/GaP
Emitting Colors: Bright RED, Orange
Yellow Green, Yellow, Hi-Eff Red,
568~700nm, Transparent Colors
Viewing Angle: 120
P/N SIC-LED-543

LED Cylindrical Type (Standard Lamp)



Size: \varnothing 5.0mm, Vf(v): 2.1~2.6
Material: GaP/GaP & GaAsP/GaP
Emitting Colors: Bright RED,
Yellow Green, Yellow
568~700nm, Defused Colors
Viewing Angle: Defused 120
P/N SIC-LED-503

LED Round Type (Standard Lamp)



Size: \varnothing 5.0mm, Vf(v): 2.0~2.6
Material: GaP/GaP & GaAsP/GaP
Emitting Colors: Bright RED, Orange
Yellow Green, Yellow, Hi-Eff Red,
568~700nm, Defused & Transparent Colors
Viewing Angle: Defused 35/Transparent 12
P/N SIC-LED-513

LED Square Type (Standard Lamp)



Size: 5.0x5.0mm, Vf(v): 2.1~2.6
Material: GaP/GaP & GaAsP/GaP
Emitting Colors: Bright RED, Orange
Yellow Green, Yellow, Hi-Eff RED,
568~700nm, Defused Colors
Viewing Angle: Defused 150
P/N SIC-LED-553

LED Round Type (Standard Lamp)



Size: \varnothing 20.0mm, Vf(v): 2.0~2.6
Material: GaP/GaP & GaAsP/GaP
Emitting Colors: Bright RED, Orange
Yellow Green, Yellow, Hi-Eff Red,
568~700nm, Defused & Transparent Colors
Viewing Angle: Defused 35/Transparent 12
P/N SIC-LED-513



LED Lamps, Modules, Lights, Towers, Dot Matrix,
Creating A Brighter Tomorrow with LEDs

sales@seoul-international.co.kr www.seoul-international.com

+82-2-2232-3716 & 3717 +82-2-2232-3718

LED Round (Supper/Ultra Bright Lamp)



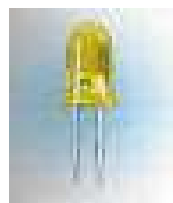
Size: Ø 3.0mm, Vf(v): 2.0~3.5, 400~7200mA
Material: GaAlAs, AlGaAs, AlGaInP, AlGaInP /GaAs, InGaN.
Emitting Colors: Supper RED, Ultra Orange Red, Ultra Yellow, Supper Orange, Supper Amber, Pure Green, Bluish Green, Blue, Pure White,
Other Colors 460~660nm Water Clear
Pure White 0.26/0.25 & 0.3/0.3nm Water Clear
Viewing Angle: 15~45
P/N SIC-LED-314

LED Round (Supper/Ultra Bright Lamp)



Size: Ø 4.8mm, Vf(v): 1.7~2.6,
Iv I_v(mcd) IF=20mA: 1500~10000mA
Material: AlGaInP, InGaN.
Emitting Colors: Ultra Orange Red, Ultra Yellow, Pure Green, Bluish Green, Blue, White,
Other Colors 470~625nm Water Clear
Pure White /
Viewing Angle: 15~30
P/N SIC-LED-483

LED Round (Supper/Ultra Bright Lamp)



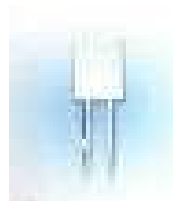
Size: Ø 5.0mm, Vf(v): 2.0~4.0,
Iv I_v(mcd) IF=20mA: 180~1500mA
Material: AlGaInP, InGaN.
Emitting Colors: Ultra Orange Red, Blue, Pure Green, White,
Other Colors 470~625nm Water Clear
Pure White /
Viewing Angle: 120
P/N SIC-LED-5R3

LED Round (Supper/Ultra Bright Lamp)



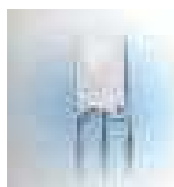
Size: Ø 5.0mm, Vf(v): 1.7~3.5,
Iv I_v(mcd) IF=20mA: 550~9300mA
Material: GaAlAs, AlGaAs, AlGaInP, AlGaInP /GaAs, InGaN.
Emitting Colors: Supper RED, Ultra Orange Red, Ultra Yellow, Supper Amber, Pure Green, Bluish Green, Blue, Pure White,
Other Colors 470~660nm Water Clear
Pure White 0.27/0.26 & 0.28/0.28nm Water Clear
Viewing Angle: 15~60
P/N SIC-LED-513

LED Rectangular (Dual Color LED Lamp)



Size: 2.0x5.0x7.0mm, Vf(v): 2.0~2.60,
Iv I_v(mcd) IF=20mA: 3.5~4mA
Material: GaAsP/GaP - GaP/GaP
Emitting Colors: Hi-Eff RED-Green, Yellow-Green
All Colors 568~635nm White Diffused
Viewing Angle: 120
P/N SIC-LED-257

LED Rectangular with Common Cathode Polarity (Dual Color LED Lamp)



Size: 2.0x5.0x7.0mm, Vf(v): 2.0~2.60,
Iv I_v(mcd) IF=20mA: 4~12mA
Material: GaAsP/GaP - GaP/GaP, GaAlAs - GaP
Emitting Colors: Hi-Eff RED-Green, Yellow-Green, Supper RED-Green,
All Colors 568~660nm White Diffused
Viewing Angle: 120
P/N SIC-LED-259

LED Round with Common Cathode Polarity (Dual Color LED Lamp)



Size: Ø 3.0mm, Vf(v): 2.0~2.60,
Iv I_v(mcd) IF=20mA: 8~200mA
Material: GaAsP/GaP - GaP, AlInGaP/GaAs - AlInGaP/GaAs
Emitting Colors: Hi-Eff RED-Green, Yellow-Green, Super Yellow-Supper Green
All Colors 570~635nm White Diffused
Viewing Angle: 40
P/N SIC-LED-319

LED Round with Common Cathode Polarity (Dual Color LED Lamp)



Size: Ø 5.0mm, Vf(v): 2.0~2.60,
Iv I_v(mcd) IF=20mA: 45~900mA
Material: GaAsP/GaP - GaP, AlGaAs/GaAs - GaP, InGaN-AlInGaN
AllInGaN- AlGaInP/GaAs
Emitting Colors: Hi-Eff RED-Green, Yellow-Green, Super RED-Hi-Eff Green, Super Blue-Green, Super Blue-SuperYellow
All Colors 570~635nm White Diffused
Viewing Angle: 50
P/N SIC-LED-519

The Specifications are subject to change without notice for improvement. All dimensions are in millimeters. Tolerance is +/-0.25mm unless otherwise specified.

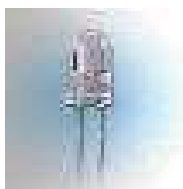


LED Lamps, Modules, Lights, Towers, Dot Matrix,
Creating A Brighter Tomorrow with LEDs

sales@seoul-international.co.kr www.seoul-international.com

+82-2-2232-3716 & 3717 +82-2-2232-3718

LED Round, Flash R.G.B LED with IC Controller (Full Color LED Lamp)



Size: Ø 5.0mm, Vf(v): 1.95~3.80,
Iv I_v(mcd) IF=20mA: 1000~4000mA
Material: AlGaInP-InGaN-InGaN
Emitting Colors: Ultra Orange-Ultra Pure
Green-Super Blue,
All Colors 470~625nm Water Clear
Viewing Angle: 20
P/N SIC-LED-513

LED Round, R.G.B LED (Full Color LED Lamp)



Size: Ø 5.0mm, Vf(v): 1.95~3.80,
Iv I_v(mcd) IF=20mA: 200~4000mA
Material: AlGaInP-InGaN-InGaN,
Emitting Colors: Ultra Orange-Ultra Pure
Green-Super Blue,
All Colors 470~625nm Water Clear
All Colors 470~625nm White Diffused
Viewing Angle: 25/90
P/N SIC-LED-515

LED OVAL (Oval Type LED Lamp)



Size: 3.9x3.0mm, Vf(v): 2.1~4.0
Iv(mcd) IF=20mA: 240~1150mA
Material: InGaN, AllInGaP/GaAs,
AllInGaP/GaP, AllInGaP
Emitting Colors: Blue, Pure Green,
Orange RED, Yellow
470~625nm, Color Transparent
Viewing Angle: 110/50
P/N SIC-LED-2V3

LED OVAL (Oval Type LED Lamp)



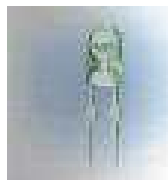
Size: 5.2x3.7mm, Vf(v): 2.1~4.0
Iv(mcd) IF=20mA: 240~1150mA
Material: InGaN, AllInGaP/GaAs,
AllInGaP/GaP, AllInGaP
Emitting Colors: Blue, Pure Green,
Orange RED, Yellow
470~625nm, Color Transparent
Viewing Angle: 110/40
P/N SIC-LED-4V3

LED OVAL (Oval Type LED Lamp)



Size: 4.2x4.8mm, Vf(v): 2.0~4.0
Iv(mcd) IF=20mA: 880~4200mA
Material: InGaN, AllInGaP/GaAs,
AllInGaP/GaP, AllInGaP
Emitting Colors: Blue, Pure Green,
Yellow, Orange RED, Ultra RED
470~625nm, Color Transparent
Viewing Angle: 50/20
P/N SIC-LED-5V3

LED OVAL (Oval Type LED Lamp)



Size: 4.6x5.7mm, Vf(v): 2.1~3.5
Iv(mcd) IF=20mA: 880~2500mA
Material: InGaN, AllInGaP
Emitting Colors: Blue, Pure Green,
Yellow, Ultra Orange RED,
470~625nm, Color Transparent
Viewing Angle: 70/35
P/N SIC-LED-6V3

LED LAMP Ø 3.0mm Round, Flangeless, With 314 Housing (HOUSING LAMP)



Housing: Plastic Holder + Combination of
Lamps Easily Mountable on any panel.
Size: Ø 3.0mm, Vf(v): 2.1~4.0
Iv(mcd) IF=20mA: 13~1200mA
Material: GaP/GaP, GaAsP/GaP, InGaN,
Emitting Colors: Bright RED, Yellow Green,
Yellow, Orange, Blue
568~700nm, All Diffused Lens Colors
470nm Water Clear Lens Color
Viewing Angle: 45/30
P/N SIC-LED-3A4-H314

LED LAMP Ø 3.0mm Round, Small Flange, With 316 Housing.



Housing: Plastic Holder + Combination of
Lamps Easily Mountable on any panel.
Size: Ø 3.0mm, Vf(v): 2.1~4.0
Iv(mcd) IF=20mA: 13~1200mA
Material: GaP/GaP, GaAsP/GaP, InGaN,
Emitting Colors: Bright RED, Yellow Green,
Yellow, Orange, Blue
568~700nm, All Diffused Lens Colors
470nm Water Clear Lens Color
Viewing Angle: 45/30
P/N SIC-LED-3A4-H316

The Specifications are subject to change without notice for improvement. All dimensions are in millimeters. Tolerance is +/-0.25mm unless otherwise specified.



LED Lamps, Modules, Lights, Towers, Dot Matrix,
Creating A Brighter Tomorrow with LEDs

sales@seoul-international.co.kr www.seoul-international.com

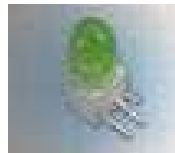
+82-2-2232-3716 & 3717 +82-2-2232-3718

LED LAMP Ø 3.0mm Round, Small Flange, With 302 Housing



Housing: Plastic Holder + Combination of Lamps Easily Mountable on any panel.
Size: Ø 3.0mm, Vf(v): 2.1~2.6
Iv(mcd) IF=20mA: 8~40mA
Material: GaP/GaP, GaAsP/GaP
Emitting Colors: Bright RED, Yellow Green, Yellow, Orange,
568~700nm, All Diffused Lens Colors
Viewing Angle: 45
P/N SIC-LED-3A4-H302

LED LAMP Ø 5mm Round, Small Flange, With 3T Housing (HOUSING LAMP)



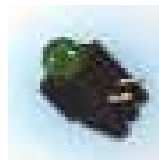
Housing: Plastic Holder + Combination of Lamps Easily Mountable on any panel.
Size: Ø 5.0mm, Vf(v): 2.1~2.6
Iv(mcd) IF=20mA: 12~80mA
Material: GaP/GaP, GaAsP/GaP
Emitting Colors: Bright RED, Yellow Green, Yellow, Orange,
568~700nm, All Diffused Lens Colors
Viewing Angle: 35
P/N SIC-LED-3A4-3T

LED LAMP Ø 5.0mm Round, With 6T Housing (HOUSING LAMP)



Housing: Plastic Holder + Combination of Lamps Easily Mountable on any panel.
Size: Ø 5.0mm, Vf(v): 2.1~2.6
Iv(mcd) IF=20mA: 12~80mA
Material: GaP/GaP, GaAsP/GaP
Emitting Colors: Bright RED, Yellow Green, Yellow, Orange,
568~700nm, All Diffused Lens Colors
Viewing Angle: 35
P/N SIC-LED-513-6T

LED LAMP Ø 4.7mm Round, With H401 Housing (HOUSING LAMP)



Housing: Plastic Holder + Combination of Lamps Easily Mountable on any panel.
Size: Ø 4.7mm, Vf(v): 2.1~2.6
Iv(mcd) IF=20mA: 5~80mA
Material: GaP/GaP, GaAsP/GaP
Emitting Colors: Bright RED, Yellow Green, Yellow, Orange,
568~700nm, All Diffused Lens Colors
Viewing Angle: 40
P/N SIC-LED-473-H401

LED LAMP Ø 3.0mm, Round, Dual Color, With LEK303 Housing.



Size: Ø 3.0mm, Vf(v): 2.0~4.0
Iv(mcd) IF=20mA: 8~95mA
Material: GaAsP/GaP- GaP/GaP , AllnGaN- AllnGaP/GaA, AllnGaP/GaAs - GaP/GaP
Emitting Colors: Hi-Eff Red/Yellow Green, Yellow/Yellow Green, Super Blue/Super Red, Super Red/Yellow Green
470~660nm, White Diffused Lens Colors
Viewing Angle: 50/40
P/N SIC-LED-319-LEK303

LED LAMP Ø 3.0mm*2Pcs, Round, Small Flange, Multi Color, With H306 Housing



Size: Ø 3.0mm*2Pcs, Vf(v): 2.1~2.6
Iv(mcd) IF=20mA: 8~30mA
Material: GaP/GaP- GaP/GaP , GaAsP/GaP-GaP/GaP, GaP/GaP, GaP/GaP, GaAsP/GaP
Emitting Colors: Bright Red/Yellow Green, Yellow/Yellow Green, Bright Red, Yellow Green, Yellow
568~700All Diffused Lens Colors
Viewing Angle: 45
P/N SIC-LED-3A4-H3063

LED LAMP Ø 3.0mm*3Pcs, Round, Small Flange, Multi Color, With K330 Housing



Housing: Plastic Holder + Combination of Lamps Easily Mountable on any panel.
Size: Ø 3.0mm*3 Pcs, Vf(v): 2.1~2.6
Iv(mcd) IF=20mA: 8~30mA
Material: GaP/GaP-GaAsP/GaP-GaP/GaP,
Emitting Colors: Bright Red/Yellow/ Yellow Green, Bright Red/Yellow Green/Yellow,
568~700All Diffused Lens Colors
Viewing Angle: 45
P/N SIC-LED-3A4-K330

LED LAMP Ø 3.0mm*4Pcs, Round, Small Flange, Multi Color, With K340 Housing



Housing: Plastic Holder + Combination of Lamps Easily Mountable on any panel.
Size: Ø 3.0mm*4Pcs, Vf(v): 2.1~2.6
Iv(mcd) IF=20mA: 8~30mA
Material: GaP/GaP-GaP/GaP-GaAsP/GaP
E/Colors: Bright Red/Yellow Green/Yellow
568~700All Diffused Lens Colors
Viewing Angle: 45
P/N SIC-LED-3A4-K340

The Specifications are subject to change without notice for improvement. All dimensions are in millimeters. Tolerance is +/-0.25mm unless otherwise specified.



LED Lamps, Modules, Lights, Towers, Dot Matrix,
Creating A Brighter Tomorrow with LEDs

sales@seoul-international.co.kr www.seoul-international.com

+82-2-2232-3716 & 3717 +82-2-2232-3718

SMD ACRICH LED'S



SIC-AW8P42A



SIC-AWX5X0A



SIC-AWW8X1A



SIC-AWX5X0A



SIC-AW8KG0X

SMD ACRICH₂ LED'S



SIC-MJP-XV04W1PX



SIC-MJE-XV04W1PX



SIC-MJE-XV08W1PX



SIC-MJE-XV12W1PX



SIC-MJD-XV16W1PX

SMD Z-POWER LED'S



SIC-Z5-M0-WX-XX



SIC-Z5-P0-WX-XX



SIC-ZWX5A0X



SIC-XZ10150



SIC-ZXX4A0A

SMD Z-POWER₂ LED'S



SIC-ZFP6F0A



SIC-ZXX7X0A



SIC-BWXXF1A



SIC-X42180



SIC-XS218X

SMD TOP VIEW LED'S



SIC-TW8T16A



SIC-TW8Q2PA



SIC-TWX12BX



SIC-FT825N-X



SIC-FT722N-S

The Specifications are subject to change without notice for improvement. All dimensions are in millimeters. Tolerance is +/-0.25mm unless otherwise specified.